

# Prima Giornata Fiorentina dedicata ai pazienti con malattie mieloproliferative croniche



Venerdì 15 aprile 2011

## la mielofibrosi: Opzioni Trapiantologiche

**ALBERTO BOSI**

Università degli Studi - Firenze



**La rarità**

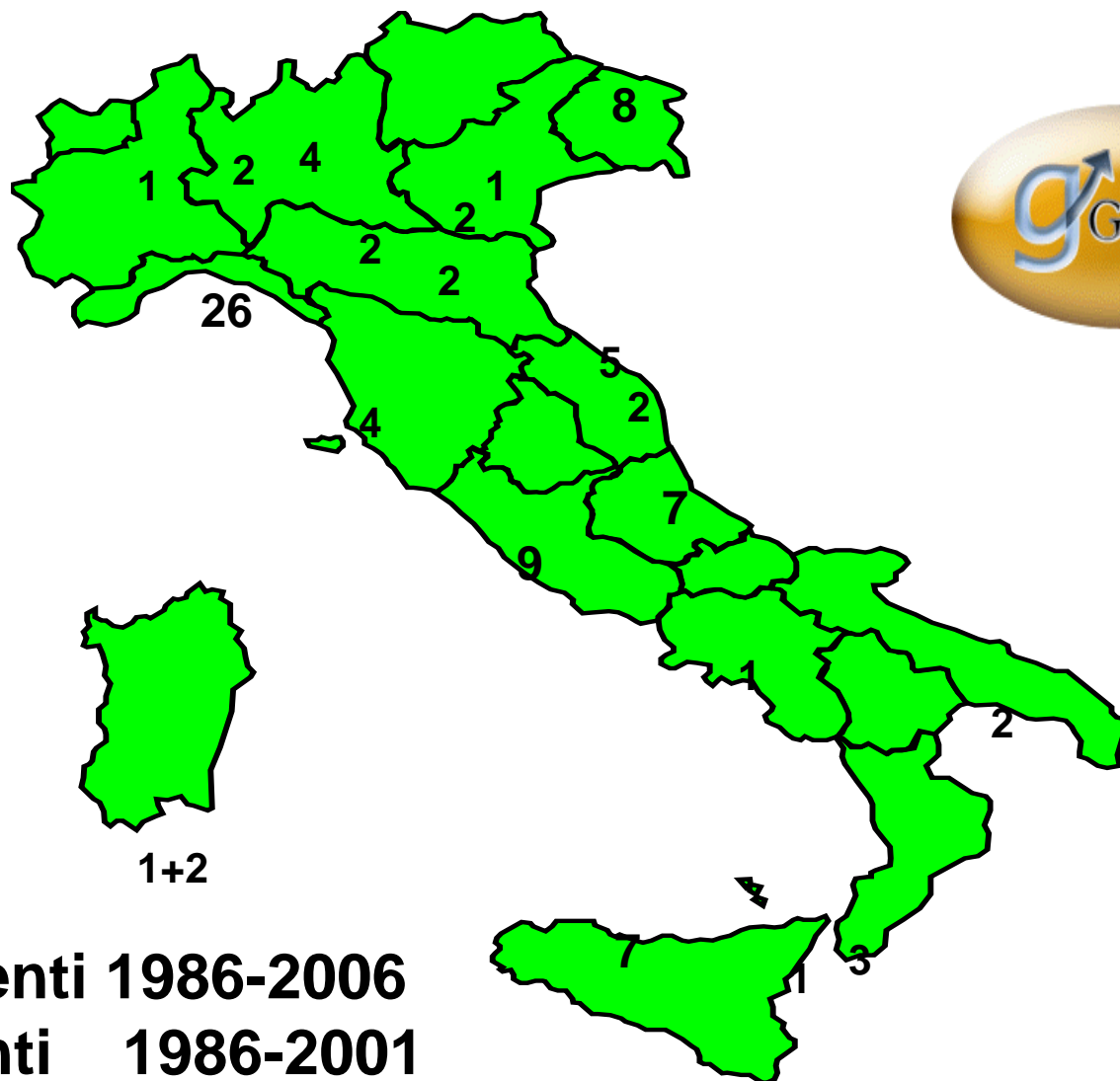
**Le indicazioni**

**Il trapianto mieloablativo**

**Il trapianto RIC**

**I fattori prognostici**

**La splenectomia**



**100 pazienti 1986-2006**

**35 pazienti 1986-2001**

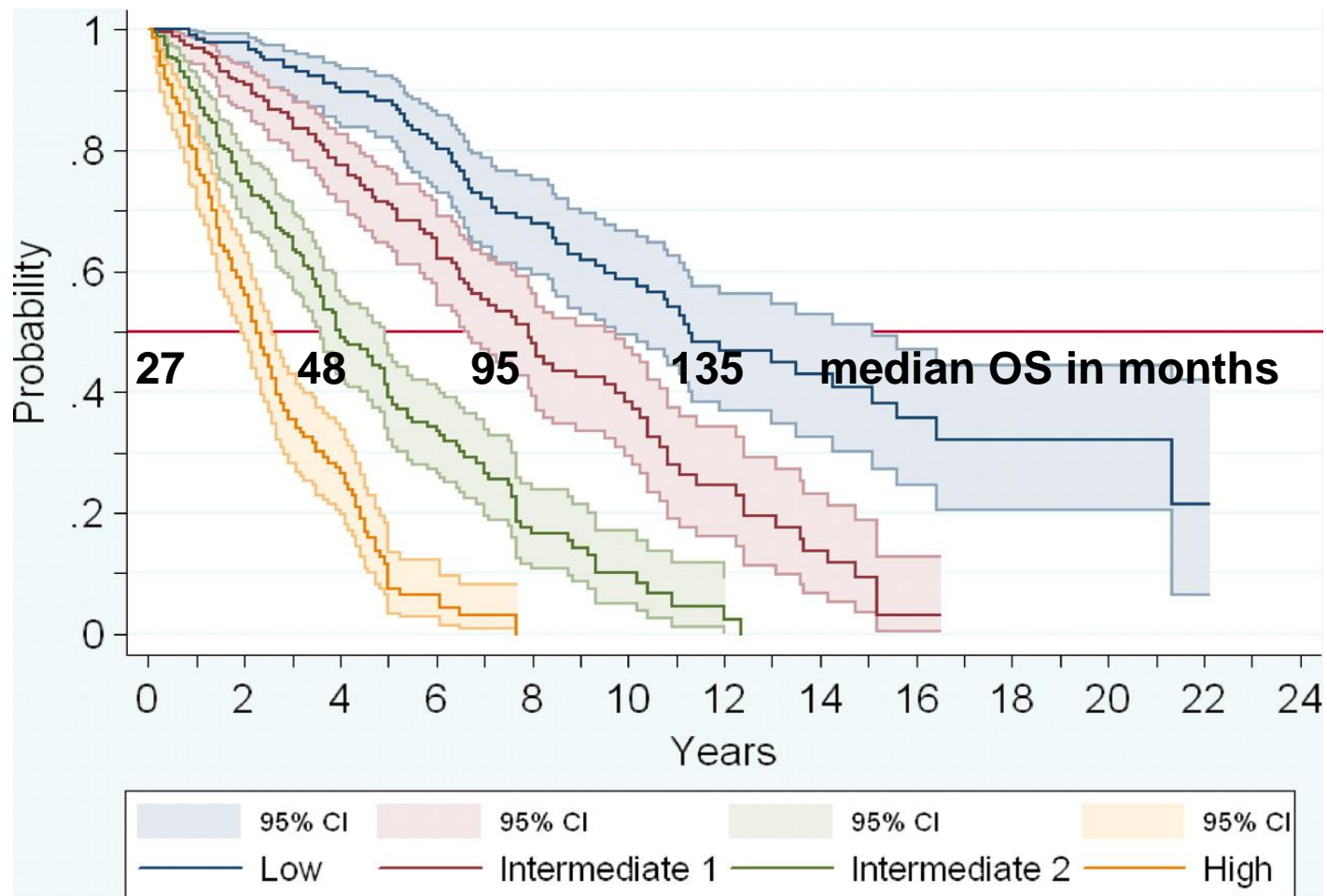
**65 pazienti 2002-2006 : 13 pazienti /anno**

**56 pazienti 2006-2009: 17 pazienti/anno**

# PROGNOSTIC SCORES ON MYELOFIBROSIS

| score                          | Lille<br>1996   | Mayo Clinic<br>1998   | Cervantes<55y  | Cervantes<br>2009  |
|--------------------------------|---|---|--|--|
| Unfavourable<br>Variables (UV) | <ul style="list-style-type: none"> <li>• Hb&lt;10g/dL</li> <li>• WCC&lt;4 or &gt;30x10<sup>6</sup>/L</li> </ul> | <ul style="list-style-type: none"> <li>• Hb&lt;10g/dL</li> <li>• WCC&lt;4 or &gt;30x10<sup>6</sup>/L</li> <li>• PLT&lt;100x10<sup>9</sup>/L</li> <li>• Monocytes c&lt;1x10<sup>9</sup>/L</li> </ul> | <ul style="list-style-type: none"> <li>• Hb&lt;10g/dL</li> <li>• Blasts &gt;1%</li> <li>• Constitutional symptoms</li> </ul> | <ul style="list-style-type: none"> <li>• Age &gt;65y</li> <li>• Hb&lt;10g/dL</li> <li>• Blasts &gt;1%</li> <li>• Constitutional symptoms</li> <li>• WCC &gt;25x10<sup>6</sup>/L</li> </ul> |
|                                | Score N°UV<br>OS  | Score N°UV OS   | Score N°UV OS  | Score N°UV OS  |
|                                | LOW 0<br>93 m<br>INT 1<br>36m<br>HIGH 2<br>13 m   | LOW 0 173 m<br>INT 1 61m<br>HIGH ≥ 2 26 m   | LOW 0-1 176 m<br>HIGH 2-3 33 m   | LOW 0 135m<br>INT-1 1 95m<br>INT-2 2 48 m<br>HIGH 3 27 m   |

**Figure 2 Actuarial survival curves of the 4 risk groups of patients according to the new PMF prognostic system**



**N° UV**

**0**

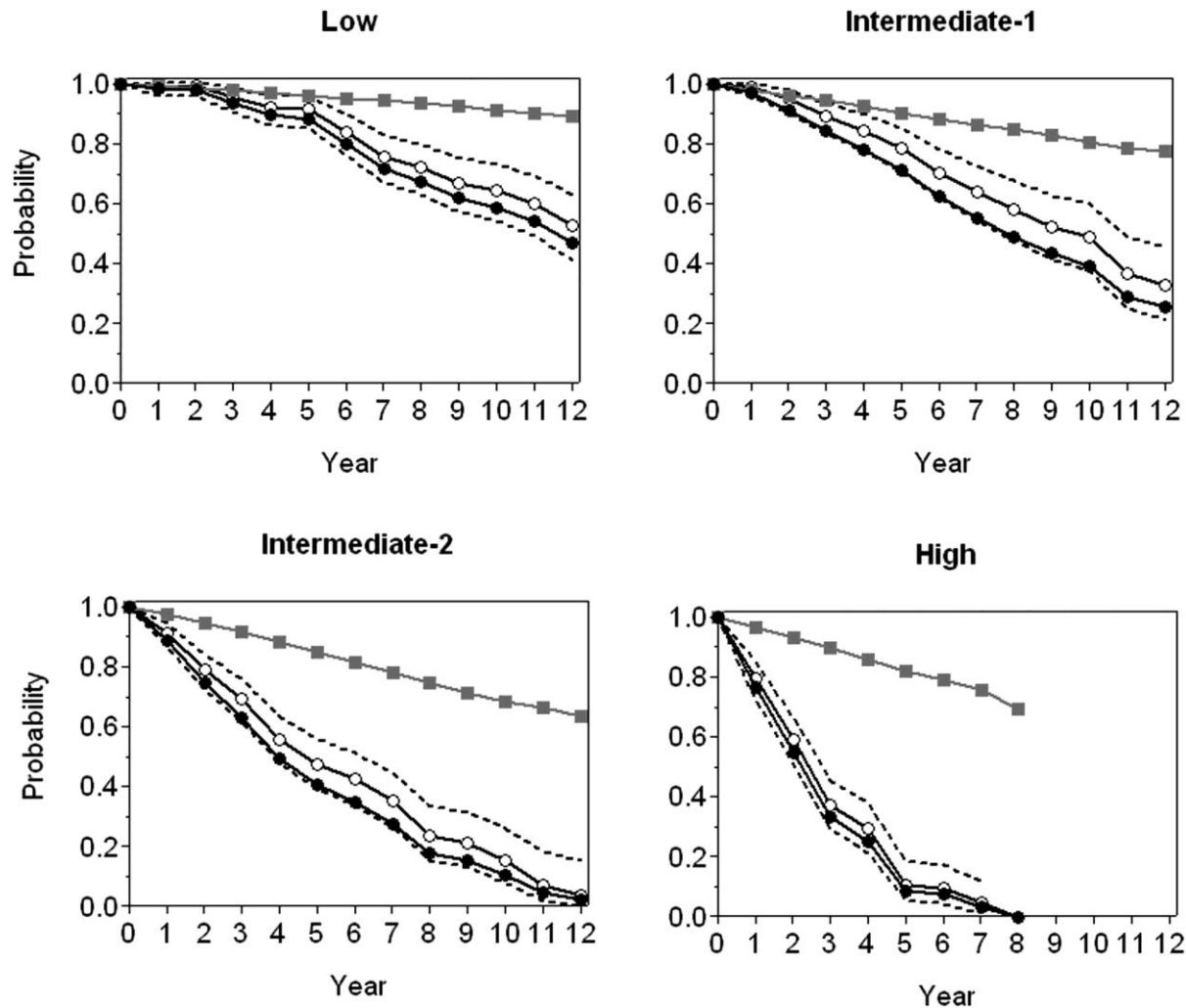
**1**

**2**

**3**

**Cervantes, F. et al. Blood 2009;113:2895-2901**

**Figure 4 Relative survival of the 4 risk groups compared with that of the general population**

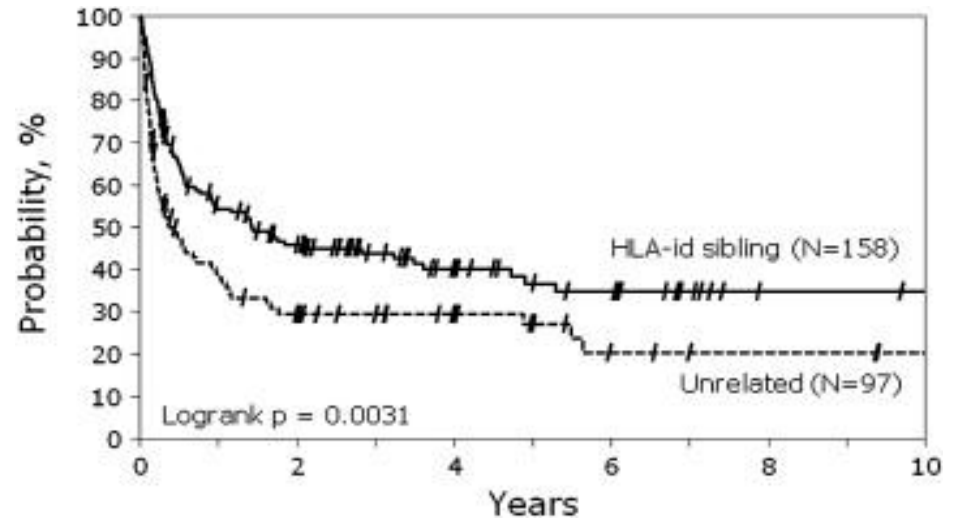
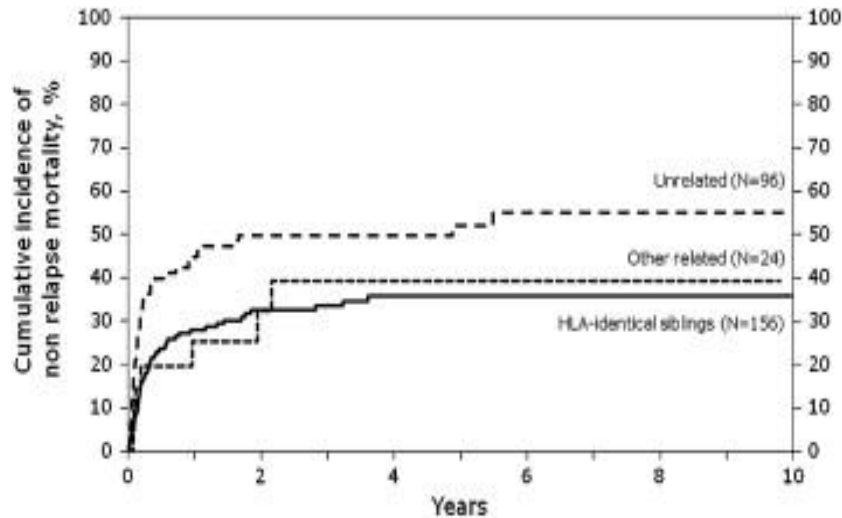


**Cervantes, F. et al. Blood 2009;113:2895-2901**

# **ALLOGENEIC SCT AFTER STANDARD MYELOABLATIVE CONDITIONING**

|                        | Guardiola '99 | Daly 2004     | Ditshkowski '04 | Kerbaay 2007  | Patriarca-GITMO 2008 | Ballen 2010 CIBMTR     |
|------------------------|---------------|---------------|-----------------|---------------|----------------------|------------------------|
| <b>N° pts</b>          | 55            | 25            | 20              | 104           | 100                  | 289                    |
| <b>Median age</b>      | 42<br>(4-53)  | 48<br>(46-50) | 45<br>(22-57)   | 49<br>(18-70) | 49<br>( 21-68)       | 47<br>(18-73)          |
| <b>Conditioning</b>    | myelo         | myelo         | myelo           | myelo         | 49%<br>myelo         | 86% myelo<br>57% Bu-Cy |
| <b>Donor Rel/unrel</b> | 49/6          | 15/10         | 13/2            | 59/45         | 82/18                | 162/127                |
| <b>Graft failure</b>   | 9%            | 9%            | n.v             | 10%           | 12%                  | 18%                    |
| <b>NRM</b>             | 27%<br>(1y)   | 48%<br>(1y)   | 40%<br>(3y)     | 34%<br>(3y)   | 43%<br>(3y)          | 36%<br>(3y)            |
| <b>OS</b>              | 47%<br>(5y)   | 41%<br>(2y)   | 38%<br>(3y)     | 51%<br>(5y)   | 42%<br>(5y)          | 36%<br>(5y)            |

# OUTCOME OF TRANSPLANT FOR MYELOFIBROSIS: THE CIMTR registry ( between 1989-2002)



**Ideal candidate for myeloablative transplant:**

- Age younger than 40 years
- Anemia or leukocytosis
- No comorbidity
- HLA- identical sibling



# **Allogeneic hematopoietic stem cell transplantation in myelofibrosis: the 20-year experience of the *Gruppo Italiano Trapianto di Midollo Osseo (GITMO)***

Francesca Patriarca,<sup>1</sup> Andrea Bacigalupo,<sup>2</sup> Alessandra Sperotto,<sup>1</sup> Miriam Isola,<sup>3</sup> Franca Soldano,<sup>3</sup> Barbara Bruno,<sup>2</sup> Maria Teresa van Lint,<sup>2</sup> Anna Paola Iori,<sup>4</sup> Stella Santarone,<sup>5</sup> Ferdinando Porretto,<sup>6</sup> Pietro Pioltelli,<sup>7</sup> Giuseppe Visani,<sup>8</sup> Pasquale Iacopino,<sup>9</sup> Renato Fanin,<sup>1</sup> and Alberto Bosi<sup>10</sup>  
on behalf of the GITMO

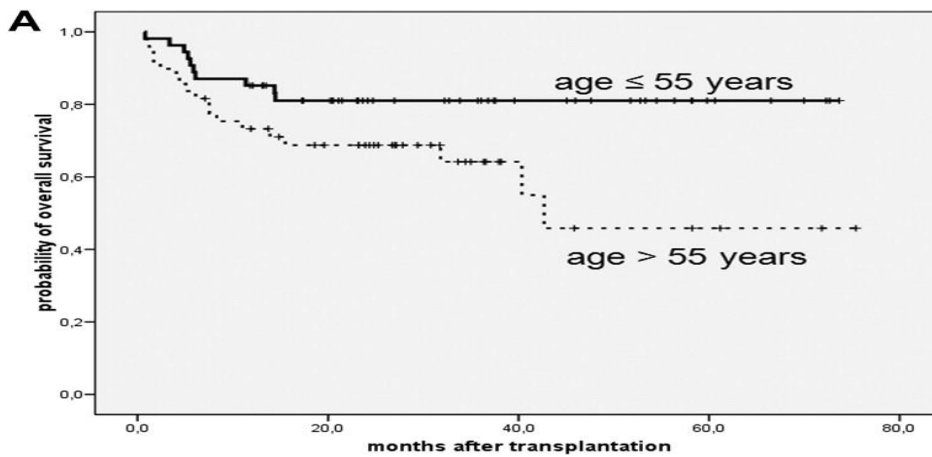
<sup>1</sup>Division of Hematology and Cellular Therapies Unit 'Carlo Melzi', Dept. of Morphological and Medical Research, University of Udine; <sup>2</sup>Hematology Division, San Martino Hospital, Genoa; <sup>3</sup>Statistics Institute, Dept. of Morphological and Medical Research, University of Udine; <sup>4</sup>Hematology Division, 'La Sapienza' University, Rome; <sup>5</sup>Hematology Department, Pescara Hospital, Oncohematology Unit; <sup>6</sup>'La Maddalena' Hospital, Palermo; <sup>7</sup>Internal Medicine and Hematology Division, 'S. Gerardo de' Tintori' Hospital, Monza; <sup>8</sup>Division of Hematology, Pesaro Hospital; <sup>9</sup>Division of Hematology, Reggio Calabria Hospital and <sup>10</sup>Hematology Division, Azienda Ospedaliera Careggi, University of Florence, Italy

# MULTIVARIATE ANALYSIS ON NRM and OS DATA

| Factor  | NRM  |           |              | OS   |           |              |
|---|------|-----------|--------------|------|-----------|--------------|
|   | HR   | 95%CI     | p            | HR   | 95%CI     | p            |
| <b>Years of SCT</b>                                 |      |           |              |      |           |              |
| <1995   | 1    | 0.08-0.75 |              | ---  | ---       | ---          |
| 1996-2000   | 0.24 | 0.12-0.81 | <b>0.014</b> | ---  | ---       | ---          |
| >2001   | 0.32 | 0.12-0.81 | <b>0.016</b> | ---  | ---       | ---          |
| <b>Time from dx to SCT</b><br>Modeled as continuous | 1.01 | 1.01-1.02 | <b>0.001</b> | ---  | ---       | ---          |
| <b>Donor</b>  |      |           |              |      |           |              |
| Sibling matched                                     | 1    |           |              | ---  | ---       | ---          |
| Unrelated or mismatched                             | 2.71 | 1.25-5.88 | <b>0.012</b> | ---  | ---       | ---          |
| <b>Source of stem cell</b>                          |      |           |              |      |           |              |
| Bone marrow   | ---- | ---       | ---          | 1    |           |              |
| Peripheral blood                                    | ---- | ---       | ---          | 0.53 | 0.30-0.96 | <b>0.036</b> |

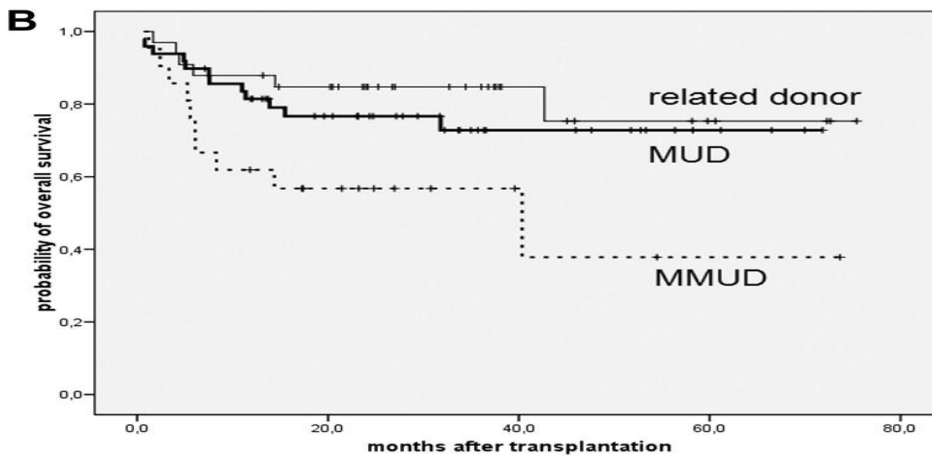
# ALLOGENEIC SCT AFTER REDUCED-INTENSITY CONDITIONING

|                        | Rondelli 2005                                     | Merup 2006                     | Synder 2006                  | Bacigalupo 2009               | Kroger 2009     |
|------------------------|---|--------------------------------|------------------------------|-------------------------------|-----------------|
| <b>N° pts</b>          | 21  | 10                             | 9                            | 46                            | 104             |
| <b>Median age</b>      | 54<br>(27-68)                                     | 40<br>(5-63)                   | 54<br>(46-68)                | 55<br>(32-68)                 | 55<br>(32-68)   |
| <b>Conditioning</b>    | Flu-bu<br>Thiotepa-cy<br>Flu-melphalan<br>Flu-TBI | Flu-bu<br>Flu-cy-<br>melphalan | Flu-<br>melphalan<br>Flu-TBI | Thiotepa-<br>cy±<br>melphalan | RIC<br>Fluda-Bu |
| <b>Donor Rel/unrel</b> | 19/2  | 20/7                           | 2/7                          | 32/14                         | 34/70           |
| <b>NRM</b>             | 9%<br>(1y)  | 29%<br>(4y)                    | 44%<br>(3y)                  | 24%<br>(1y)                   | 16%<br>(1y)     |
| <b>3y-relapse</b>      | 9%<br>(3y)  | NE                             | 0%<br>(3y)                   | 19%<br>(3y)                   | 22%<br>(3y)     |
| <b>OS</b>              | 78%<br>(2y)                                       | 70%<br>(4y)                    | 56%<br>(3y)                  | 45%<br>(5y)                   | 67%<br>(5y)     |



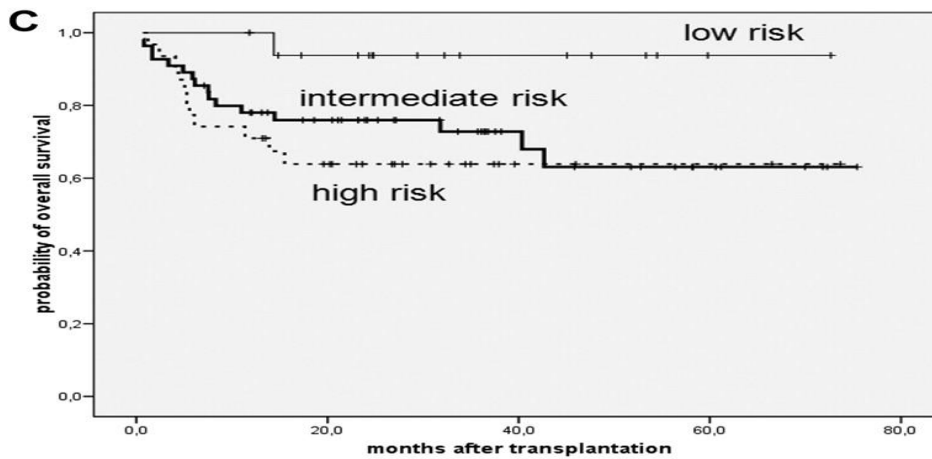
**Age > 55 years  
Mismatched MUD donors  
absence of JAK mutation**

**are negative predictors of OS**



**Splenectomy  
Lille high-risk score**

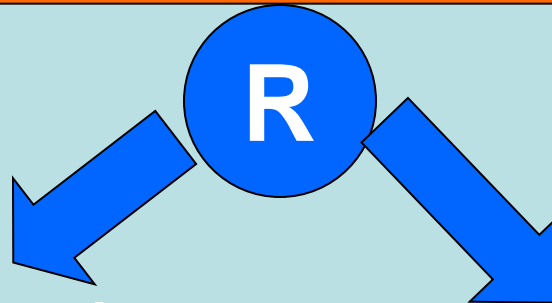
**are significant factors for  
increase risk of relapse**



# GITMO randomized phase II study

Myelofibrosis primary or post ET/PV age 18-70  
Intermediate-high Lille score or low with constitutional symptoms or circulating blasts > 1%

HLA-id sibling donor or HLA unrelated donor ( one allele mismatched in class 1 accepted)



Fludarabine 180 mg/mq  
Busulfan 8 mg/mq  
ATG in unrelated donor

Fludarabine 180 mg/mq  
Thiotepa 12 mg/Kg  
ATG in unrelated donor